



# Integrating AI into Community College Programs

**NAAIC AI Summit 2026**

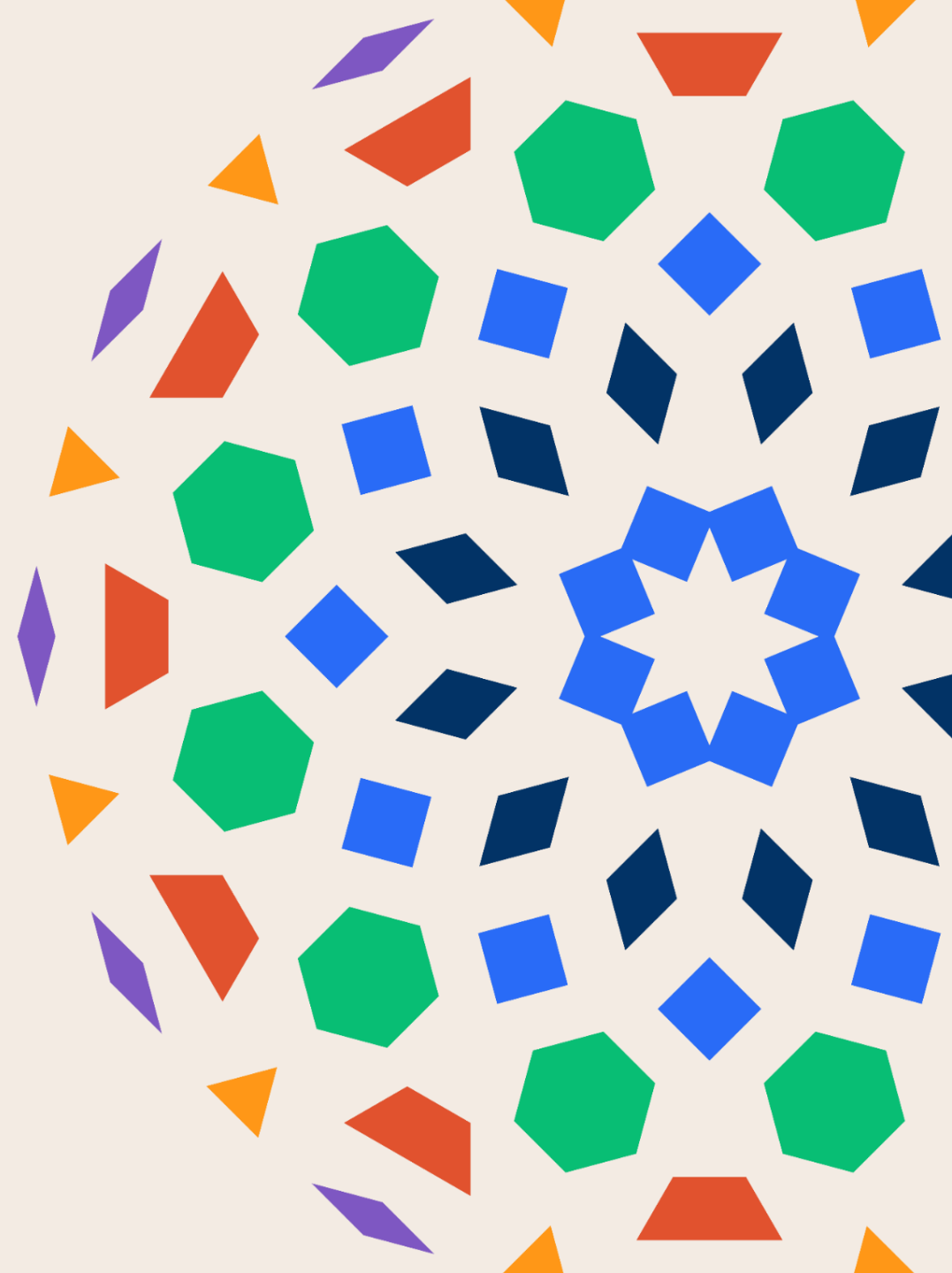
Friday, February 20

Joyce Malyn-Smith, Principal Investigator, EDC (MA)

Susan Uland, Green River College (WA)

Chris Jones, Harford Community College (MD)

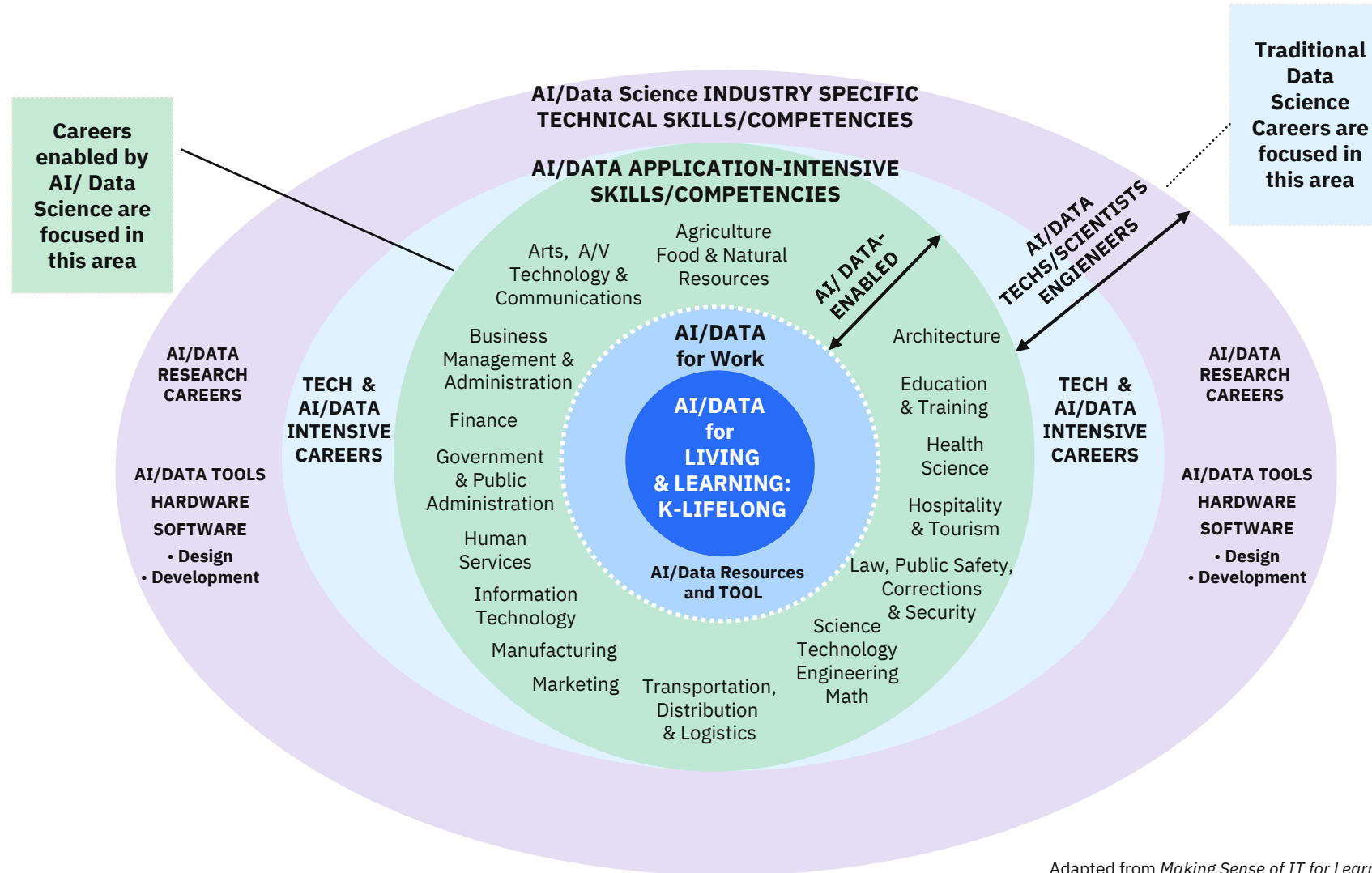
Rob Tudor, Nashville State Community College (TN)



## This session will familiarize you with:

- Integrating Artificial Intelligence Literacy into Community College Programs (NSF funded)
- Green River College (WA) Experience
- Harford Community College (MD) Experience
- Nashville State Community College (TN) Experience

# Where Does AI Fit? AI for Living, Learning & Working



# Our Partners



This work is supported by a grant from the National Science Foundation, grant number 2436098. Any opinions, findings, and conclusions or recommendations expressed in this material are those of the author(s) and do not necessarily reflect the views of the National Science Foundation.

# Community College Pathways to AI Careers - Goals & Objectives



## GOAL 1

Community college (CC) students transition seamlessly into bachelor's degree programs in AI.



## GOAL 2

Strategic plans to build AI literacy among students are operationalized in partner colleges.



## GOAL 3

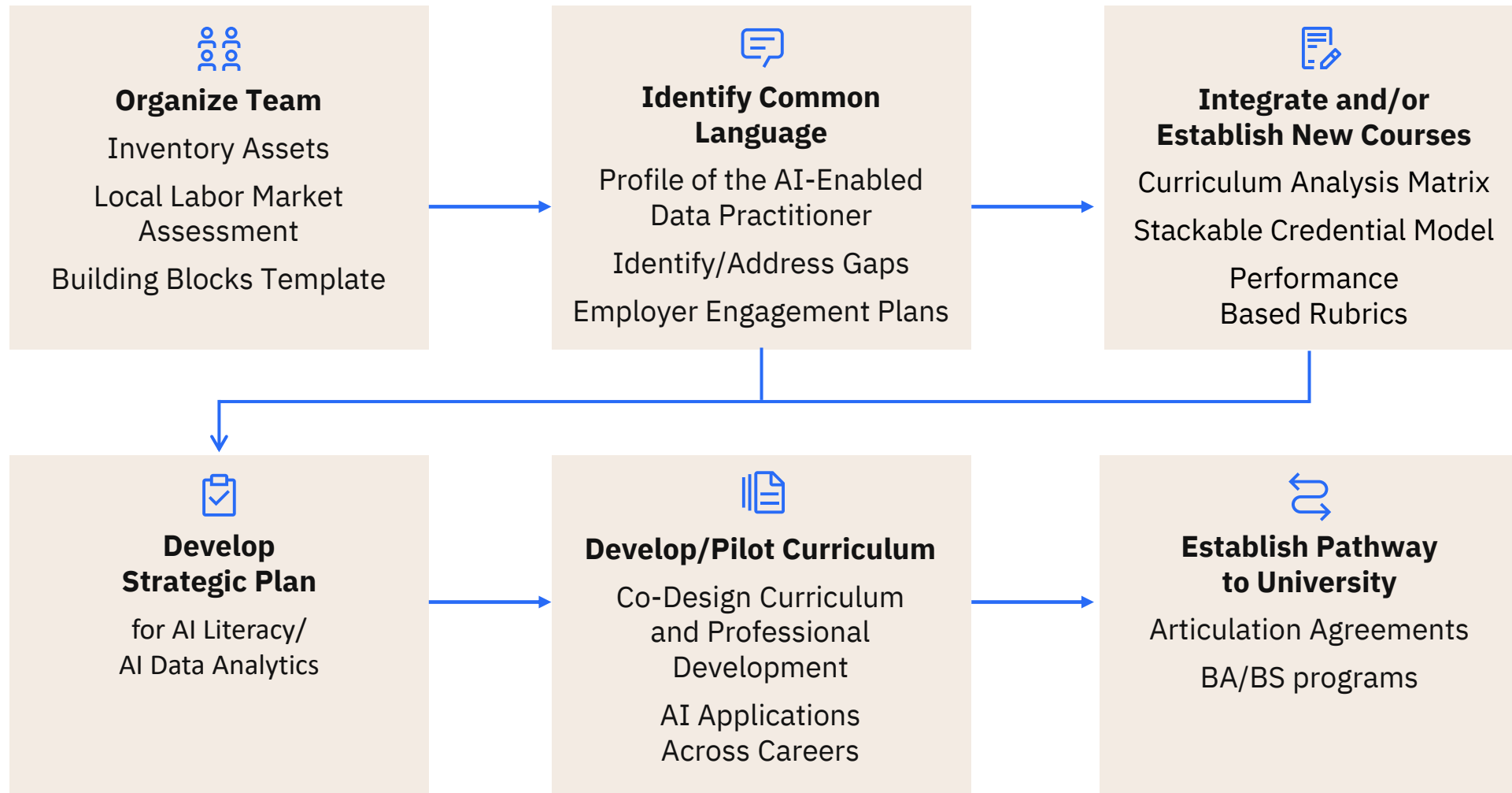
Faculty are well-prepared to implement new courses and integrate AI into existing courses.



## GOAL 4

Community colleges nationally have access to products to build pathways for students toward bachelor's degree programs in AI and AI careers.

# AI/Data Pathway Development Process



## WHAT DO THE MODULES COVER?



### **Module 1: What is AI?**

What AI is (and isn't), where it shows up in daily life, and how it differs from human intelligence.



### **Module 2: AI Ethics**

Bias, trade-offs, sustainability, and practical strategies to use AI responsibly.



### **Module 3: AI Core Concepts**

Foundations of Machine Learning (ML), deep learning, and generative AI.



### **Module 4: Large Language Models**

How LLMs are built and trained, and where their biases/limits come from.



### **Module 5: AI Across Careers**

How AI is changing sectors, departments, and specific jobs; skills students need to thrive.



### **Module 6: Using AI for Learning**

Practical student tasks (idea generation, writing, quizzing, tutoring) and responsible use.



# AI LITERACY IMPLEMENTATION STUDIO

## Interested in Participating?

- EDC will coordinate with partner colleges to offer the Studio PD for the remainder the project as budget allows on a first come, first served basis
- For more information: [go.edc.org/AI-Lit](https://go.edc.org/AI-Lit)
- Email your interest to Sarah MacGillivray at [smacgillivray@edc.org](mailto:smacgillivray@edc.org)



# The *Use-Appraise-Modify-Create* Learning Progression for AI

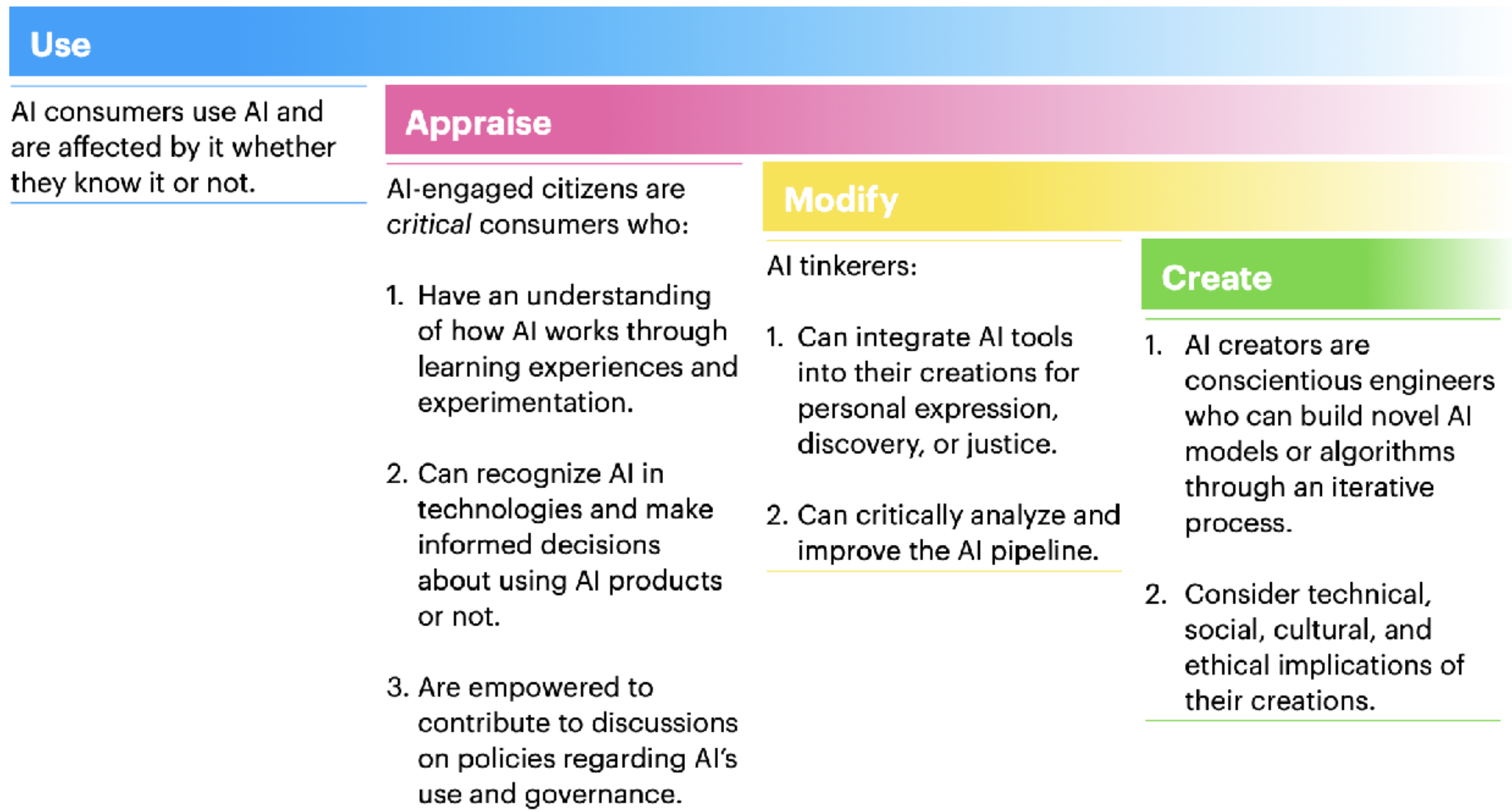


Figure 1. UAMC learning progression. Use, Appraise, Modify, Create. A path from everyday user to creator that aligns with CTE goals. (Lao & Lee, in press).

# AIMs in DS Curriculum Overview

## DATA SCIENCE

### Analytics



#### UNIT 1

Mathematics

Statistics in R

Visualization

*Analysis of the past  
Static perspective*

### Artificial Intelligence in Data Science



#### Logic Systems

#### UNIT 2

Decision Trees



#### Machine Learning

#### UNIT 3

Supervised Learning

#### UNIT 4

Neural Networks

#### UNIT 5

Transfer Learning

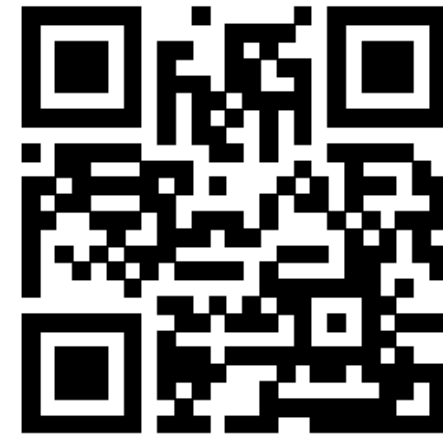
K Nearest Neighbor

**How is your community college integrating  
ARTIFICIAL INTELLIGENCE  
into coursework and curriculum?**

**COMMUNITY COLLEGE AI LITERACY NEEDS SURVEY**

Share your thoughts and  
learn how others are integrating AI  
into college programs!

Visit [go.edc.org/AINeeds](https://go.edc.org/AINeeds) or scan the QR code.





# IAVES Framework for Human-AI Interaction

## Initiate Interaction with AI

**Ask clearly and keep refining:**

- Say exactly what you need.
- Give examples if possible.
- Try again if it's not right the first time.



## Analyze

**Does the content address your purpose and goals?**

- Does it fully answer your prompt?
- Does it have the right tone and format?



No

**Iterate**

**Iterate**

## Verify

**Did the response provide correct information?**

- Did you double-check the facts and details?
- Is everything clear and correct?



No

## Elevate

**Make it even better:**

- Edit for clarity and impact.
- Add examples or insights.
- Fine-tune to fit your purpose.



## Socialize

**Share and get buy-in:**

- Explain your choices clearly.
- Tailor your message to your audience.
- Invite input and build support.

## **Health Sciences: Patient Education One Pager on Wound Care**

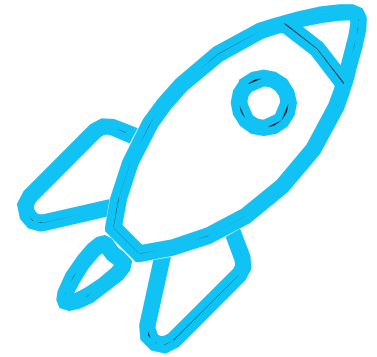
Ask AI to “draft a 250-word handout on post-op wound care for adults reading at a 6-7<sup>th</sup> grade level. Use plain language, bullets and a Call your clinic if.... section”

## **Manufacturing: Maintenance SOP Revision**

Ask AI to “revise this hydraulic press SOP to include lockout and tagout steps, pre-use inspection, and PPE per OSHA 1910.147 and 1910.132. Keep to one page with a checklist.”

## Elevate: Make it even better

- **Edit for clarity and impact**
  - **Add examples or insights**
  - **Fine tune to fit your purpose**
- 

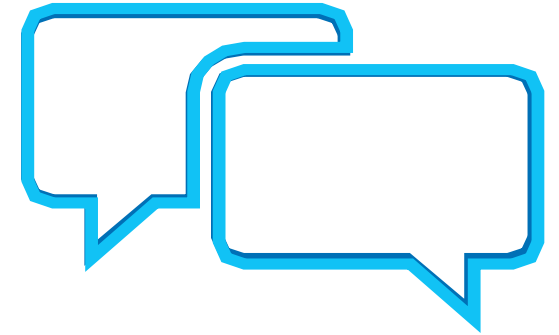


**Elevate:** Add local clinic hours, phone numbers and multilingual availability. Include image placeholders your program uses.

**Elevate:** Add your shop's tool IDs, shift schedule constraints and local signage. Embed photos from your lab.

## Socialize: Share and get buy-in

- Explain your choices clearly
- Tailor your message to your audience
- Invite input and build support



---

**Socialize:** Present to a mock supervisor. Capture feedback and finalize the handout with a revision log.

**Socialize:** Present to a peer safety committee. Record decisions and post the final SOP in the shop binder with version and date information.

## Harford Community College (MD)



- Located in Harford County, MD.
- Approximately 5,000 degree seeking students total (mid-size institution).
- Approximately 75 students declared as Data Science/Certificate majors.

# Harford Community College (MD)



## Data Science Degree and Certificate

- Fundamental Concepts in Data Science and AI
- Programming/Language Skills: Excel, R, Python, SPSS, C++, Tableau
- Math skills: Elementary Statistics, Differential Calculus
- Presentation and teamwork skills

## Continuing Education

- Training/upskill on demand for local employers

# Nashville State Community College (TN)

Since 1970, Nashville State Community College has provided quality, affordable, and accessible higher education to Middle Tennessee. Today, Nashville State continues to prepare students for success with seven campuses around the middle Tennessee area. Our supportive community is what makes us one of the best community colleges in Nashville and across Tennessee. Nashville State has:

- 23 associate degree programs
- 32 technical certificate programs
- 47 transfer programs
- 8,084 students enrolled:
  - 56% first-generation
  - 52% part-time
  - 44% adult-learners
  - 66% female; 34% male



# Nashville State Community College (TN)

Nashville State has 5 Concentrations of study for students seeking an A.A.S. in Information Technology:

- Data Analytics
- Programming/Software Development
- Networking
- Systems Management & Admin
- Cyber Defense/Cyber Security



AI Project Activities & Curriculum Development at Nashville State:

- Rolled out an online introductory course on GenAI for Students (spring 2025)
- Supported multiple pop-up workshops for students (spring 2025)
- Implemented a series of six professional development sessions for faculty/staff (2025)
- Organized an AI Task Force for the college (fall 2025)
- Offered a new course, “Intro to AI” to the catalog (spring 2026)
- Currently pursuing implementation of project-developed curricular modules into courses & programs

# Green River College (WA)



- Located in King County, WA.
- Approximately 8,500 degree seeking students at GRC
- Approximately 95 students declared as AAS-T Data Analytics and Software Development students.
- Approximately 95 students declared as BAS Software Development students with a special topic concentration in Data Science and Applied AI.

## Green River College (WA)



### College AI Infrastructure:

- Governance
  - AI Task Force
- Resources
  - AI Task Force
  - NAAIC and NITIC
- Funding
  - EDC subaward (NSF #2436098)
  - ExLENT project (NSF #2347311)
  - GRC Foundation/Operating Funds

## Green River College (WA)



### College AI Goals:

- Faculty trained in AI
- Faculty choice as to how to incorporate AI into courses from:
  - No AI
  - AI for Learning Support
  - Using AI for Generation
  - Training AI's
- Students trained in AI
  - Access to Basic AI Literacy Course in Student Orientation Canvas Shell

## Green River College (WA)



### **AAS-T in Data Analytics and Software Development**

- Programming/Language Skills: Google Sheets/Excel, SQL, Python/Pandas, Java, HTML/CSS, JavaScript, Tableau
- Math skills: Elementary Statistics, Pre Calculus 1
- Capstone Course: Presentation and teamwork skills
- Basic AI Literacy Skill integration in SDEV 101 – Data Analytic Technologies
- New course offering for 2026-2027: Artificial Intelligence Fundamentals

# Green River College (WA)



## BAS in Software Development Degree

- Skills: C++, SQL, Java, Cloud Computing, JavaScript/React
- Math skills: Elementary Statistics, Pre Calculus 1
- Presentation, Capstone and teamwork skills
- Two new special topic course offerings for 2026-2027
  - Introduction to Data Science and Supervised Machine Learning
  - Applied and Agentic AI
  - Microsoft AI-900 AI Fundamentals Certificate Exam
- 7 Students participated in CodeDay and MinT ExLENT AI-Related Fellowships receiving \$23,100 in direct stipends
- Technical Writing – Students complete Google AI and Prompting Essentials

## Green River College (WA)



### Takeaways from using the AI Basic Literacy Assignments with Students

- Overall, students enjoyed completing the assignments and often mentioned in the course discussion posts that they were learning and finding the content engaging

### Surprises for me:

- Over 50% of students could not correctly identify which images and poems were created by a person versus AI generated.
- Some students were not aware of the environmental impacts of AI usage.

•

# QUESTIONS?

**How is your community college integrating  
ARTIFICIAL INTELLIGENCE  
into coursework and curriculum?**

**COMMUNITY COLLEGE AI LITERACY NEEDS SURVEY**

Share your thoughts and  
learn how others are integrating AI  
into college programs!

Visit [go.edc.org/AINeeds](https://go.edc.org/AINeeds) or scan the QR code.





For more information, visit our website at **[aicc.edc.org](http://aicc.edc.org)**

PI Joyce Malyn-Smith, Ed.D | [jmsmith@edc.org](mailto:jmsmith@edc.org)

Co/PIs, Partners:

- Green River College: Susan Uland [suland@greenriver.edu](mailto:suland@greenriver.edu)
- Harford College: Chris Jones [cjones@harford.edu](mailto:cjones@harford.edu)
- Nashville State Community College: Robert Tudor [robert.tudor@nsc.edu](mailto:robert.tudor@nsc.edu)



AI in CC is supported by a grant from the National Science Foundation (DRL 2436098).